



Evergreen Garden Club

# WILD IRIS

---

MAY 2019



**HELLO MAY!**

*We thought you would never get here!*

NEXT MEETING  
TUESDAY  
MAY 14, 2019

BERGEN PARK FIRE  
HOUSE

9:00 a.m. Social  
9:30 a.m. Meeting

THE MAY MEETING WILL BE A  
WORKDAY FOR ALL PUBLIC GARDENS

After a hearty breakfast and short meeting,  
we will head out to wake-up and clean up  
the public gardens. (details below)

# NEED A CURE FOR SPRING FEVER?

*Play in the dirt with wild abandon!*

*EGC TUESDAY MAY 14<sup>th</sup> MEETING  
will be a workday for all public gardens!*

The morning will start with coffee, breakfast and a quick meeting before heading out to the gardens.

## WHAT TO BRING?

Gardening Gloves

Shade Hat

Sunscreen

Water Bottle

Favorite Hand Tools

A Hearty Appetite

Questions? Not sure which garden to work in?

If you have not volunteered to work in a specific garden and would like to -

Contact Cherie Luke at 720-625-2491

[Cherie7651@gmail.com](mailto:Cherie7651@gmail.com)

or find her at the meeting!



## Evergreen Garden Club April 9, 2018 - Meeting Minutes

The meeting was called to order at 9:30 a.m. by First Vice President Cherie Luke. Board members present were Kris Waggoner, Cindy Gibson and Susan Garcia. President Carol Herczeg and Second Vice President Mary Twombly were absent. Thirty-six additional members were in attendance.

### Welcoming Committee

Louise Sprot introduced new members Judy McCaffrey and Alice Lightle.

### First Vice President's Report

The club sang "Happy Birthday" to our members born in April.

Cherie announced that after the May 14th business meeting and hearty breakfast, the club will adjourn and members will disperse to work in their respective gardens. There will be no educational presentation. If you have not signed up to work in a garden or would like to switch gardens, please let Cherie know. Some garden leaders may choose to work on a different day.

Due to a shoulder injury and subsequent surgery, Barb Steger will not be able to manage the Metro Garden. Helen McLeman will step in to help, but an additional person will be needed.

After our June 11th business meeting, we will have a members-only plant sale. Please bring in plant divisions, seeds, bulbs, etc. for purchase by other members. All proceeds will be donated to EChO.

There will also be a crazy garden hat contest. The board will select a winner in each category: funniest, most unique, and most 'gardeny' hat. Each winner will receive a \$25 gift certificate from O'Toole's Garden Center.

Cherie asked the club if members would be interested in touring Denver Botanic Gardens as a group. Many members showed interest and a date in June will be selected. Members of DBG or the American Horticultural Society would be able to use their membership cards to admit other club members.

Cherie announced that a new photographer will be needed. Susan Blake will be moving this summer. Not only has Susan been the Club's historian/photographer, but she has been a Past President and a Garden Tour Host. We thank her for her many years of service.

### Hospitality Committee

Annell thanked Lindy Doty for the flower arrangement, and thanked the Hospitality Committee, as well as members who brought in food today. She asked members to sign up to bring hearty dishes next month. Dishes should be in place on the Hospitality Table by 9:00 a.m. She passed around a sign-up sheet.

### EChO Table

Jeanne Erickson encouraged members to donate as well as purchase items from the EChO Table. The monies collected are donated to help EChO maintain their vegetable garden that helps stock their pantry.

### **Treasurer's Report**

Kris gave the financial report, highlighting the budget for the public gardens. \$475.00 will be paid for the liability insurance payment. The money budgeted for the Rodeo will not be necessary as we will not participate this year. Our charitable gift of \$250.00 has been sent to EAS+Y. Jo Powers encouraged members to visit their website: [easy4you.org](http://easy4you.org) to learn more about recycling, composting and energy conservation information and events.

So far, we have collected \$100 from donations from the Echo table, which is less than previous years.

King Soopers has a new Community Rewards Program. Instead of using a card, you may designate Evergreen Garden Club to receive 5% of your grocery bill. Kris is working on enrolling the club in the program.

There is currently \$2,664.00 in the checking account and \$22,859.00 in the savings account.

### **Secretary's Report**

Cindy Gibson asked for approval of the March minutes as printed in the Wild Iris. The minutes were approved without additions or corrections.

An individual to volunteer to be Secretary for the next two years is needed.

### **Technology Officer's Report**

Susan Garcia would like someone to volunteer to replace or assist her in the Technology Officer's position.

She encouraged members to visit the Evergreen Garden Club's Facebook Page.

Cherie announced upcoming plant sales:

- The Denver Botanic Gardens Spring Plant Sale will be held on May 10 from 8 a.m. to 6 p.m., 1007 York Street, Denver
- The Front Range Organic Gardener/Herb Society Plant Sale will be held on May 18 from 9 a.m. to 1:00 p.m. at St. John's School and Church, 700 S. Franklin Street, Denver.
- The Denver Master Gardener Plant Sale will be held on May 18 from 8 a.m. to 3 p.m. and May 19 from 10 a.m. to 3 p.m. at Harvard Gulch Park, 888 E. Iliff Avenue, Denver
- The Gilpin County Plant Sale will be held on June 8 from at 9 a.m. to 1 p.m. at the Extension Office, 230 Norton Drive, Black Hawk, Colorado.
- The Crested Butte Wildflower Festival will be held from July 5 through July 14. Online registration is open now.

The meeting was adjourned at 9:56 a.m. Cherie introduced Irene Shonle, Gilpin County Extension Director, who spoke on Native Plants for Year-Round Interest.

Respectfully submitted,  
Cindy Gibson, Secretary  
Evergreen Garden Club

EGC  
APRIL 2019 MEETING



Pictures by Susan Blake



IRENE SHONLE GAVE AN INFORMATIVE  
PRESENTATION ON  
*'NATIVES FOR YEAR-ROUND INTEREST'*



Pictures by Susan Blake



Miss the EGC April Presentation?  
The following are several slides from Irene's presentation  
showing native plants with year-round interest.

Little bluestem (*Schizachyrium scoparium*)  
keeps color most of the winter



Creeping mahonia (*Mahonia repens*) also shines in the spring  
with honey-scented flowers – shade tolerant!



Leafy cinquefoil (*Drymocallis fissa*), wallflower (*Erysimum capitatum*)  
and blue mist penstemon (*Penstemon virens*)



Blue flag iris (*Iris missouriensis*) and  
windflower (*Anemone multifida*)



Sticky geranium (*Geranium viscosissimum*), \*showy locoweed  
(*Oxytropis lambertii*), \*sidebells penstemon (*Penstemon  
secundiflorus*) and fringed sage (*Artemisia frigida*)



Lupine (*Lupinus argenteus*) and Mexican  
hat (*Ratibida columnifera*)





Sneezeweed (*Helenium hoopesii*) and  
scarlet gilia (*Ipomopsis aggregata*)



Prairie zinnia (*Zinnia grandiflora*)



Little Bluestem "Blue Heaven" (*Schizachyrium  
scoparium* "Blue Heaven")



[grasstalk.wordpress.com](http://grasstalk.wordpress.com)

**Placement of winter garden:  
Put winter interest plants where you  
will walk by them on the way in  
or see them from a window.**

### Three-leaf sumac (*Rhus trilobata*)




Utah public radio


Santa Fe Botanical Garden (three-leaf sumacs in red).

### Seed heads






## IMPORTANT DATES TO REMEMBER!




The Denver Botanic Gardens  
Spring Plant Sale  
will be held on May 10th  
from 8 a.m. to 6 p.m.  
1007 York Street, Denver



The Front Range Organic  
Gardener/Herb Society Plant Sale will  
be held on May 18  
from 9 a.m. to 1:00 p.m. at  
St. John's School and Church  
700 S. Franklin Street, Denver






The Denver Master Gardener Plant Sale  
will be held on May 18 from 8 a.m. to 3 p.m.  
and May 19 from 10 a.m. to 3 p.m. at  
Harvard Gulch Park  
888 E. Iliff Avenue, Denver

The Gilpin County Plant Sale  
will be held on June 8  
from at 9 a.m. to 1 p.m.  
at the Extension Office.  
230 Norton Drive  
Black Hawk, Colorado





2019 EGC group visit to the  
Denver Botanic Gardens on  
Tuesday, June 18!

All that are interested, please meet at  
8:30 am at the Bergen Park & Ride for  
car-pooling to the Botanic Gardens.

The Crested Butte Wildflower Festival  
will be held from July 5 through July 14.  
Online registration is open now!



A reminder from  
Meredith Bossert

# 18<sup>th</sup> Annual Great Sale of Organic Garden Plants

Tomatoes – dozens of varieties – mostly wonderful heirlooms  
50+ Herb Varieties! Peppers! Other Vegetables – ALL ORGANIC!

Also, annuals, perennials & ground covers!

*Most were seed-started by our members  
or divided from our own organic gardens.*



**Saturday, May 18, 2019**  
**9 a.m. to 1 p.m.**

*(Come Rain or Shine! – we're warm and dry inside!!)*

**St. John's Church and School**  
**700 S. Franklin St., Denver, CO**

*(just east of Washington Park – access from east side, follow signs!)*

**Payment: CASH only**

*(Please bring a watertight container to carry your purchases!)*

*Presented by*

**Front  
Range  
Organic  
Gardeners**



*and*

**The Herb Society  
of America**



**Rocky Mountain Unit**

*For more info: [www.GardenFROG.org](http://www.GardenFROG.org) or e-mail [frog.plant.sale@gmail.com](mailto:frog.plant.sale@gmail.com)*

Over 90% of FROG's sale proceeds benefit public education on organic gardening,  
and grants to other non-profits who practice and promote organic gardening principles



## UNDERSTANDING THE FERTILIZER LABEL

The label on a bag of fertilizer shows the percentages of nutrients in the mix. The three numbers shown most prominently, called the N-P-K ratio, refer to the amounts of nitrogen (N), phosphorus (P), and potassium (K) in the bag. For example, an 8-4-4 fertilizer contains, by weight, 8 percent nitrogen, 4 percent phosphorus, and 4 percent potassium. Nitrogen is the most critical element, promoting good foliage growth and flowers.

**Table 39-1. Routine Application Rates for Compost**

Site	Incorporation Depth <sup>2</sup>	Depth of Compost before Incorporation <sup>1</sup>	
		Plant-based compost and other compost known to be low in salts <sup>3</sup>	Compost made with manure or biosolids for which the salt content is unknown <sup>4</sup>
One-time application — such as lawn area	6–8"	2–3"	1"
	3–4"	1–1½"	½"
Annual application to vegetable and flower gardens—first 3 years	6–8"	2–3"	1"
	3–4"	1–1½"	½"
Annual application to vegetable and flower gardens—fourth year and beyond	6–8"	1–2"	1"
	3–4"	1"	½"

<sup>1</sup>Three cubic yards (67 bushels) covers 1,000 square feet approximately 1 inch deep.

<sup>2</sup>Cultivate compost into the top 6–8 inches of the soil. On compacted/clayey soils, anything less may result in a shallow rooting depth, predisposing plants to reduced growth, low vigor, and low stress tolerance. The 3–4 inch depth is shown as an illustration of how application rates need to adjust when the deep cultivate is not practiced.

<sup>3</sup>Plant-based composts are derived solely from plant materials (leaves, grass clippings, wood chips, and other yard wastes). Use this application rate also for other compost known, by soil test, to be low in salts.

<sup>4</sup>Use this application rate for any compost made with manure or biosolids unless the salt content is known, by soil test, to be low. Excessive salts are common in many commercially available products sold in Colorado. Based on soil tests of commercially available compost, this application rate may be too high for products extremely high in salts.

Resource: *The Science of Gardening* by David Whiting



# THINGS TO START THINKING ABOUT FOR OUR UPCOMING EGC *JUNE 11, 2019* MEETING



After our *June 11th* business meeting, we will have a members-only plant sale.

Please bring in plant divisions, seeds, bulbs, etc. for purchase by other members.

All proceeds will be donated to EChO.



There will also be a crazy garden hat contest! The board will select a winner in each category: 'funniest', 'most unique', and most 'gardeny' hat.

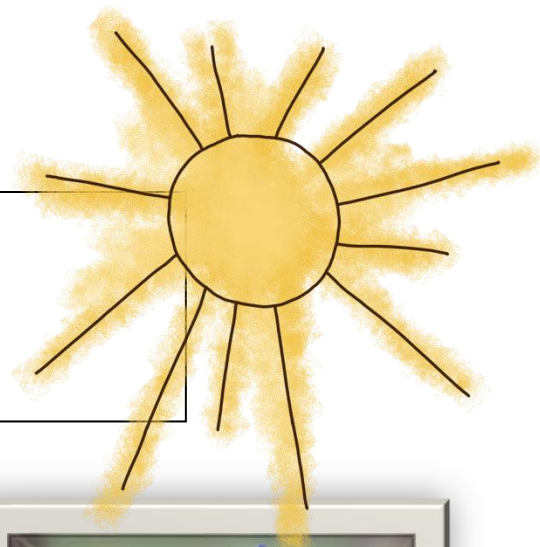
Each winner will receive a \$25 gift certificate from O'Toole's Garden Center.





# OPPOSITES ATTRACT!

Notes from Landscape Design 101



**ROUND FLOWER WITH SPIKE**  
**1/3 – 2/3**  
**ONE SHOULD DOMINATE**



**POINTING UPWARDS WITH**  
**FACING DOWNWARDS**



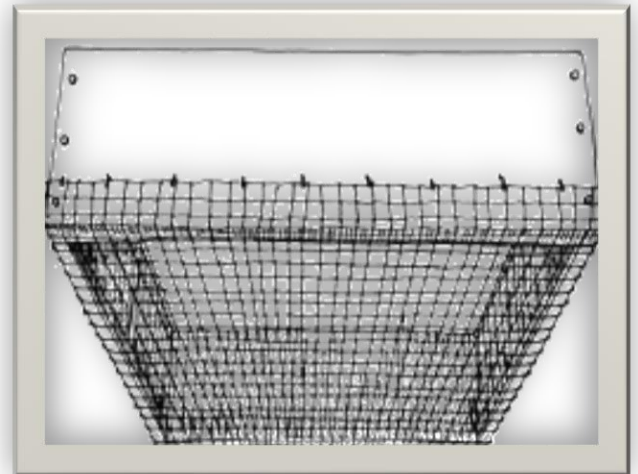
## RAISED BEDS – THE EASY SOLUTION

There's a simple solution to dealing with soil that is too shallow or drains poorly: heap soil on top of it and grow above grade. To form the sides of a raised bed, use landscape timbers, decay-resistant wood, brick, concrete block or stone; or simply make a firm mound with sloping sides and a surrounding ditch. Plan to have the soil surface within the raised bed one foot or more above the normal grade outside.

Dig a 4-inch layer of organic material into the existing soil, going down a foot or more if you can. Then add topsoil (taken from another part of the garden or purchased), and dig it into the improved native soil, adding another 4-inch layer of organic matter at the same time. Water the bed deeply and let it settle before you plant. If it sinks significantly, mix more topsoil into the bed.

Resource: *Sunset 365 Days of Garden Color*

**If possible, line the bottom of your raised bed with ¼ inch wire cloth before filling to keep the pocket gophers and voles from coming up from underneath.**



**WELCOME NEW MEMBERS!**

**JUDY MCCAFFREY  
ALICE LIGHTLE**

First time new members joining on or after April 1<sup>st</sup> of each year will pay half of the full-year's dues = \$15.00



Best Wishes to all of our  
EGC May Birthday Girls!



And Guys!




**GO PAINT!**  
A paint your own pottery studio & more!  
Now featuring the unique and wonderful world of Bee Scape

  
**Sundance Gardens**

**Mountain Pies**  
**BEAUJOS**  
Colorado Style Pizza  
Kat Alexandrova  
GENERAL MANAGER  
28186 CO-74  
Evergreen, CO 80439  
303.670.2744  
PHONE  
303.670.2812  
FAX  
evergreen@beaujos.com  
**BEAUJOS.COM**

  
**Evergreen National Bank**

  
**Nellybelle**  
root yourself in the unexpected.  
General Store

  
**The Holly Berry**  
in The Heart of Downtown Evergreen Since 1987  
28165 Highway 74  
Evergreen, CO 80439  
www.thehollyberry.com  
Pam Gilbert  
303-674-4821  
888-842-3779

  
**Evergreen Goldsmiths**  
Walt Pawluczkojcz  
ORIGINAL  
JEWELRY  
DESIGNS  
28235 Main Street  
Evergreen, CO 80439  
303-670-0730  
evergreengoldsmiths.com Fax: (303) 679-0513  
SINCE 1974

**STEMS**  
a flower shop  
www.stemsflowershop.com  
303.674.4995

**ECODESIGNS**  
LANDSCAPE ARCHITECTURE LLC  
Native and Xeric Plants  
Grading and Drainage Design  
ALL HARDSCAPE DESIGN  
lucy@ecodesignsllc.com  
www.ecodesignsllc.com  
Evergreen CO 303-881-2150

**JP Total, Inc.**  
serving you since '92  
John Pfeiff  
owner  
Office: 303-670-8414 • Fax: 303-670-4995  
• Full-Service Grounds/Turf Care  
• Irrigation Install & Service  
• Landscape Design & Install  
email: service@jptotallawnncare.com

**Wildflower Cafe**  
  
**EVERGREEN CO**

  
Rhonda Payer  
Owner/Manager  
Store hours:  
Mon-Fri 6am-6pm  
Sat-Sun 7am-6pm  
Carry-out Available  
Like Us On Facebook!  
**JAVA GROOVE**  
28186 Hwy 74 Evergreen, CO. 80439  
303.674.4494

**SP**  
Steven Parks  
**Goldsmith and Fine Jeweler**  
Colorado's Premier Custom Jewelry Studio  
One of Denver and Evergreen's Longest Standing Fine Jewelry Studios  
Steven Parks remains a Touchstone to the Artistry of a Master Goldsmith.  
With over 50 years of Experience, his Studio Produces only the Highest Quality pieces for Every Customer.  
5870 West 38th Avenue  
Wheat Ridge, CO 80212  
303.674.1719  
www.stevenparks.com

Please send any corrections or submissions for the Wild Iris to [louiseheern@gmail.com](mailto:louiseheern@gmail.com)

