



Evergreen Garden Club

WILD IRIS



FEBRUARY 2020



NEXT MEETING

TUESDAY

FEBRUARY 11, 2020

BERGEN FIRE STATION

8:00 am Yoga (firehouse kitchen)

9:00 am Social

9:30 am Meeting

February's Program

Apothecary Tinctura

By

EGC Member

Hannah Hayes

**Evergreen Garden Club
General Business Meeting
January 14, 2020**

The meeting was held at Bergen Park Fire Training Center and called to order at 9:40am by President, Carol Herczeg. Board members present were: First Vice President Peggy Bertrand, 2nd Vice President Donna Moore, Treasurer Helen McLeman, Technology Officer Susan Garcia and Secretary Janice Theobald.

Welcoming Committee

Cindy Gibson welcomed new members, Shari Flannery and Idske Heimstra and returning members, Elizabeth (Betsy) Kelson, and Marlo Griesser. 46 total members were in attendance.

President's Report

Carol went over the Mission Statement, our service to 9 public gardens and Yoga offered before the general meetings.

The club sang Happy Birthday to the January birthday members.

Hospitality Committee

Annell thanked everyone who brought food today, and distributed the clip board for volunteers for the next meeting.

Annell is heading up the committee to select gardens for the 2021 Garden Tour. She is asking for volunteers for the committee as well as suggestions of host gardens. Thank you to Cherie Luke who has committed her garden for the tour.

We need a Chairperson for the 2021 Garden Tour.

Public Garden Coordinator, Cherie Luke Announced Colorado Native Plant Society Event, Saturday, February 29, 2020 9am-5pm.

Need Committee and volunteers for "Earth Day".

1st Vice President

Peggy introduced our speaker Harriett McMillan from Echter's Greenhouse and Garden Center.

2nd Vice President

Donna is still encouraging members to renew their membership. Please be sure your dues are in good standing! We added Sundance Landscape as a business member, increasing our business members to seven.

Treasurer's Report

Helen reviewed the budget and treasurer's report. Currently we have \$2,468.63 in checking and \$22,372.13 in savings for a total of \$24,840.76 in our accounts. Helen confirmed we are still listed as a "charity" on our Federal Tax Return. A question came up as to whether we can deduct the membership dues on our personal tax returns as tax exempt deduction. That question should be referred to your personal accountant or CPA.

**Evergreen Garden Club
General Business Meeting (Continued)
January 14, 2020**

Secretary's Report

Janice asked for approval of December minutes as printed in the Wild Iris. The minutes were approved without any additions or corrections.

Technology Report

Susan updated us on how to find the minutes online using the new "tab"
She listed our business members and invited Jan Parks from Steven Parks Goldsmith and Michelle Lewis from Dietbalance, to speak briefly on their businesses.

The meeting was adjourned at 10:10 am.

Peggy introduced our speaker Harriett McMillan and the program "Favorite Perennials"





Annell Hoy is heading up a committee to select gardens for the 2021 Garden Tour. She is asking for volunteers for the committee as well as suggestions of host gardens.

annell517@yahoo.com



We also need a Chairperson for The 2021 Garden Tour!



Valentine's Day is on the way!



GO PAINT!
A paint your own pottery studio & more!

Now featuring the unique,
Whimsical and wonderful world of  Wee Scapes

Easy & Breezy • No Appointment Necessary
Historic downtown Evergreen on Bear Creek
behind Baskin Robbins

Pottery * Mosaics * Fairy Gardens and so much more...



Creating A Winter Garden



At higher altitudes, winter can last a long time!
PLANT WITH INTENTION! Place your favorites
within view of your windows.



Unless they are diseased, leave the seed heads
intact. They feed the birds and create beautiful
winter interest.





When looking to plant a shrub or tree, think about what it can add to other seasons and a winter landscape. Many have bright colored berries and/or interesting bark.

Not sure what look you like? Visit Denver Botanical Gardens in the winter; or before you visit the garden center in the spring. Concentrate on the xeric and native sections. This will give you a much better idea of what the plants look like together in the context of a place. That's where you'll learn the most. It's also a good time to look at flowering shrubs and trees to see their true form.

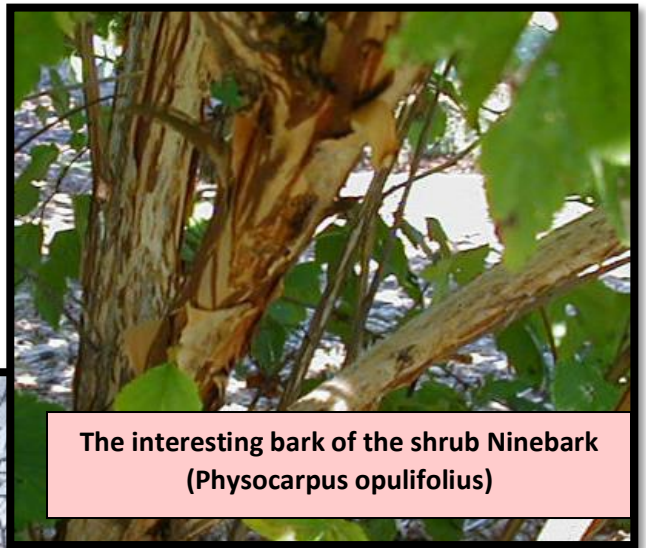
Imagine how different these same landscapes would look if the gardener had cut everything back in the fall.



photo by Carol Hugler



A Millet dream-come-true for the birds!



The interesting bark of the shrub Ninebark (*Physocarpus opulifolius*)



Mountain Ash – beautiful in winter too!

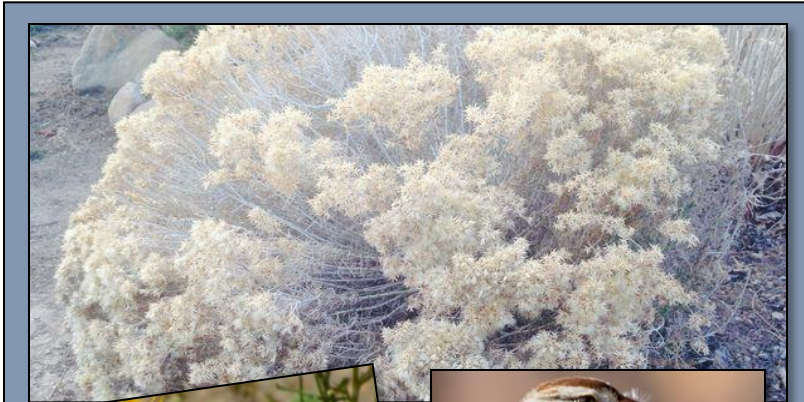


Photo © Terry Gray

Yes! The trees and shrubs listed here will grow in Evergreen and are critter-resistant. Deer and Elk may browse Dogwoods but typically leave enough of the shrub for your enjoyment. ;-)



Red Twig Dogwood in Winter.



Rabbitbrush (*Chrysothamnus nauseosus*) is an important native and beautiful regardless the season.





EGC Member Pam Hinish shares her 'Winter Garden' Pics
Not only beautiful, but a 'Certified Wildlife Refuge' providing a year-round food and water source for birds and animals.

Thank you for sharing, Pam!





Creating a more *'Care-Free'* Garden with Conifer beds



ICE QUEENS: PLANTS THAT SPARKLE UNDER FROST


It's not easy looking gorgeous in the cold, but these plants add structure and beauty to the winter landscape, and the rest of the year as well.



Conifer beds with *Abies procera*. Like scatter cushions on a favorite sofa, evergreens plump out the garden and provide a bumpy canvas against which you can paint with annuals, perennials and bulbs. Conifers are sometimes maligned but little else provide such rich textures and firm shapes especially at this time of year. Frost only softens the natural vibrant colors of *picea* (foreground) and the dangling dreadlocks of coffin juniper (*Juniperus recurva* var. *coxii*).

For more winter plant options, visit the link below.

Reprinted/Resources from:
<https://www.stuff.co.nz/life-style/homed/gallery/104711485>



**VALENTINE'S DAY IS ON THE WAY!
PLEASE PATRONIZE OUR
BUSINESS MEMBERS!**



**The Evergreen Gallery
Sundance Landscaping
Steven Parks Goldsmith &
Fine Jeweler
Stems Flower Shop
Sundance Gardens
The Holly Berry**

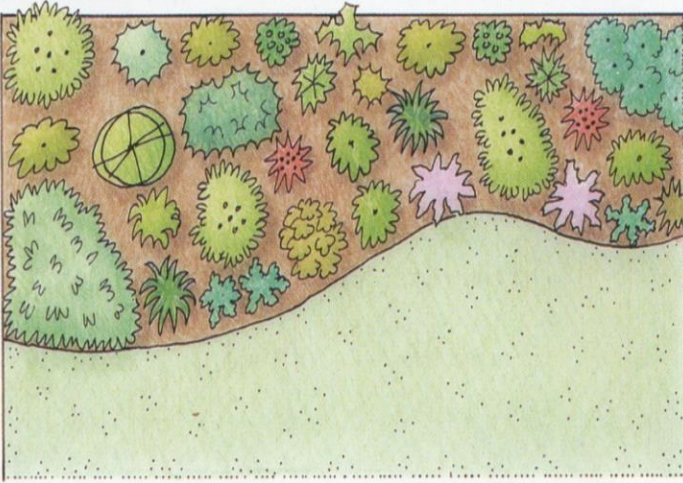


**Evergreen National Bank
JP Total
Nellybelle
Go Paint!
The Holly Berry
Wildflower Café
Cactus Jack's Saloon & Grill**

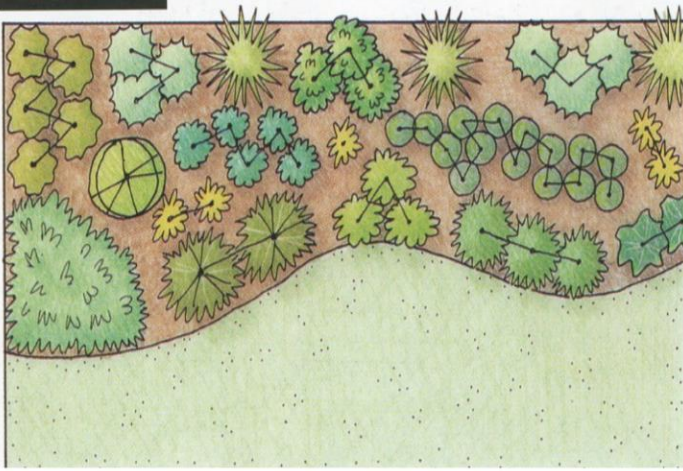


**Echo Designs -
Landscape Architecture
Diet Balance
Beaujo's
Java Groove
Evergreen Goldsmiths**

BEFORE



AFTER



NOTES FROM LANDSCAPE DESIGN 101

Instead of planting one of many different plants, cluster the same or similar plants together.

Vary the shape of the clusters; some long and narrow, some wide.

Use larger masses with fewer plants; smaller masses when using a greater variety of plants.

Generally better to increase the size of the masses, rather than the number of masses.

Best Wishes to all our
EGC February Birthday
Boys and Girls!





Time to give Mother Nature her due! Earth Day 2020 is coming up in April and EGC needs committee volunteers! Please contact Annell Hoy, Cherie Luke or any of the EGC Board members for more details on how you can help. Thank you!!



Join our own EGC President, Carol Herzeg, certified Kripalu Yoga Instructor for an hour of gentle yoga; emphasis on compassionate self-observation without judgement. Kripalu Yoga is accepting and adaptable to everyone, no matter your age, ability, size or particular challenges. Students are guided to become more intimate with their breath and their moment to moment sensations and experiences. The possibility is to relax, increase mobility and flexibility, and to make the choice to engage in what is most nourishing and lovely.

Wear comfortable clothing, bring a yoga mat (if you have one) and join us the second Tuesday of each month in the kitchen area of the Bergen Fire Station at 8:00 am - one hour before the EGC meeting.

Landscaping with Colorado Native Plants Conference

The 2020 [Landscaping with Colorado Native Plants Conference](#) is on Saturday, February 29th at Tivoli on Auraria Campus! [Registration is OPEN!](#)



Follow the above link for more details or to register.
Hold your cursor over the link, hold down the control button and click!

UPCOMING HABITAT HERO GARDENING EVENTS

www.audubon.org

Working with Natives in the Name of Wildlife

Denver, CO | March 7 @ 5:30pm

Habitat Hero is offering a special workshop with Kenton J. Seth as our keynote speaker! Learn about the most important and practical ways you can use native plants to help wildlife. Cost is \$25 for members and \$35 for non-members. [Register](#)

Wildscape Ambassador Training + Pollinator Safe Neighborhood

Longmont, CO | March 22 @ 11am

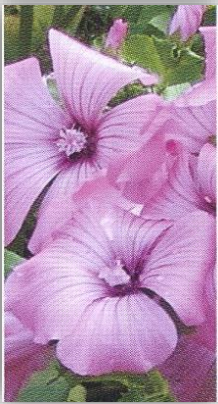
Do you have a passion for native plants? Use it to inspire others as a Wildscape Ambassador! Ambassadors are volunteers who receive training to promote native gardens in their own communities. Included in this training will be a presentation from PPAN. Cost is \$20. [Register](#)



'Young Lady' smoke tree
Cotinus coggygria
'Young Lady'
Zone 4



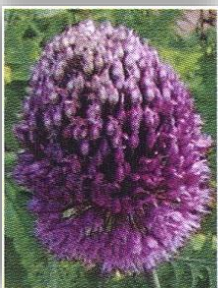
'Camelot Rose' foxglove
Digitalis purpurea
'Camelot Rose'
Zone 4



'Silver Cup' mallow
Lavatera trimestris
'Silver Cup'
Annual



'Coronation Gold' yarrow
Achillea filipendulina
'Coronation Gold'
Zone 3



Drumstick allium
Allium sphaerocephalum
Zone 4

**A pretty combination for
Zone 4 gardens**



Resource: *Designer Plant Combinations* by Scott Calhoun

Native Pollinators & Mason Bee Lodge Workshop

When: Thu, March 12, 6pm – 8pm
Where: Georgetown Heritage Center, 809 Taos St, Georgetown, CO 80444,
([map](#))

Description:

BEE Friendly to our Native Bees!

NATIVE POLLINATOR PRESENTATION & MASON BEE LODGE WS

Did you know that Colorado has over 900 species of bees? The honey bee is just one of those species. So, what's all the BUZZ? Humans depend on pollinators for about 1/3rd of our diet, with the most nutritious part being vegetables, fruits and nuts. Many of these staples are pollinated by native bees! However, bees and other pollinator populations around the world are declining. Lisa Mason, Horticulture Agent for CSU Extension in Arapahoe County since 2018, will talk about pollinator biology including native bees, how to recognize native bees, how to develop pollinator habitat, the facts on stinging insects and how to support our pollinators locally.

Following the presentation, "make and take" your own Mason Bee Lodge.
All supplies and light refreshments were provided.

DATE: Thursday March 12th, 2020

TIME: 6pm - 8pm

COST: \$20/person - All supplies are included. Giveaways and light refreshments provided.

RSVP: RSVP on Eventbrite. We need a minimum of 8 participants to hold the workshop, and will cap tickets to 15 participants. Ticket sales end Monday March 9th.





**WELCOME
NEW MEMBERS!**

Kathy Anderson

Judy Black

Shari Flannery

Mike & Dottie Fraser

Debbie Kerr

Elizabeth (Beth) Kelson

Sundance Landscaping

Sheilah Roenfeldt

The Evergreen Gallery



Please send any questions, corrections, additions, or submissions for the Wild Iris to louiseheern@gmail.com 